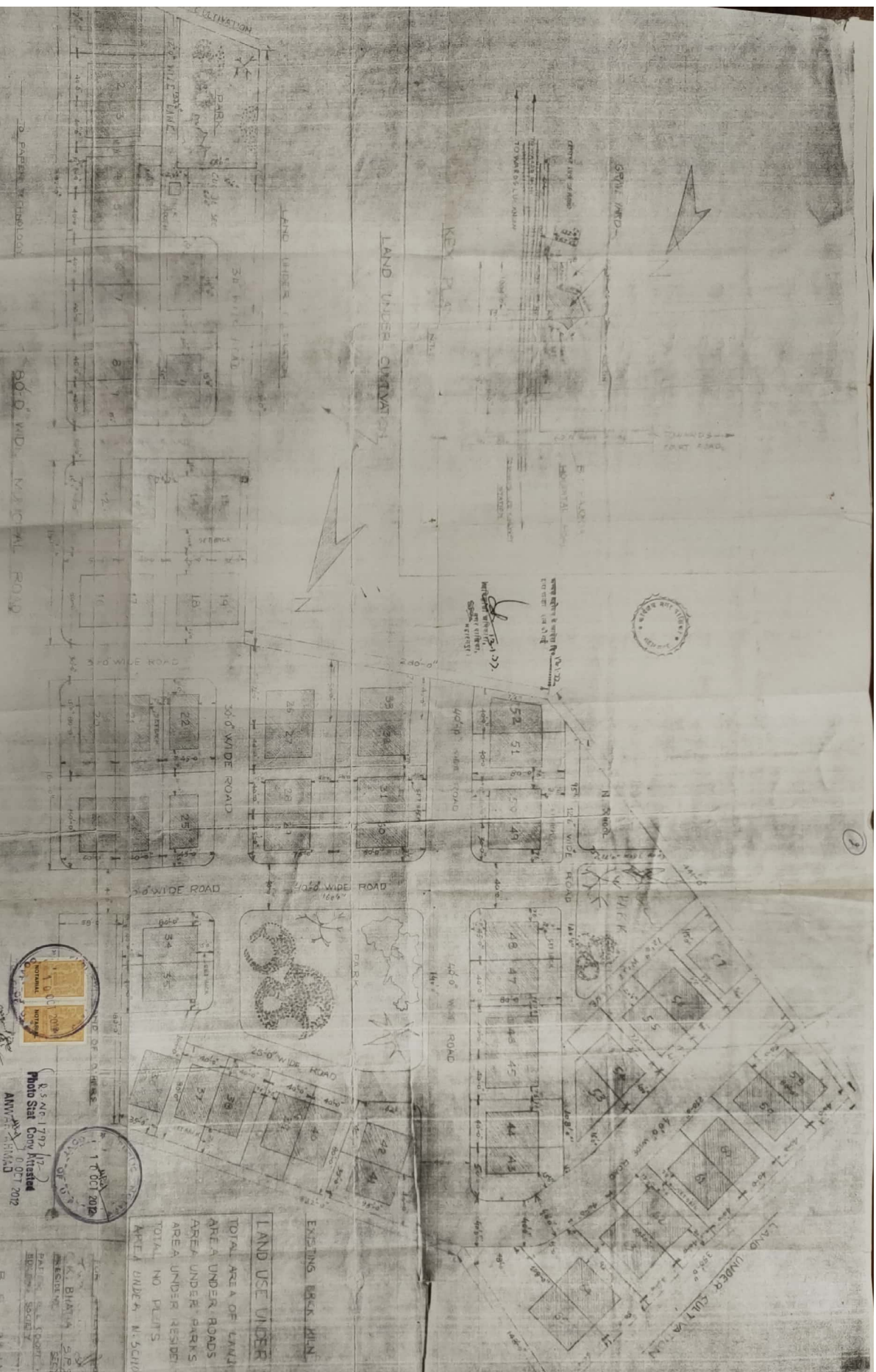


REVISED LAY-OUT PLAN OF PAPER MIL. EMPLOYEES CO-OP. HOUSE BUILDING SOCIETY, SAHARANPUR.

PLAN - OUT PLAN SCALE - 1"=40'-0"



APPROVED
1 OCT 2012

APPROVED
1 OCT 2012

APPROVED
1 OCT 2012

R/S No: 1707/12
P.O. Saharanpur
M.V. Saharanpur
Approved: 2/10/2012

LAND USE UNDER	PERCENT HEADS
TOTAL AREA OF LAND	39550 SQRDS
AREA UNDER ROADS	9373 SQRDS
AREA UNDER PARKS	4100 SQRDS
AREA UNDER RESIDENTIAL USE	27773 SQRDS
TOTAL NO. PLOTS	55
AREA UNDER N. SCHOOL	400 SQRDS

SAHARANPUR

ARCHITECTS & ENGINEERS

SOPHIA NARAYAN & SONS

ARCHITECTS & ENGINEERS

SAHARANPUR